

# Rules to Find the Primary Break

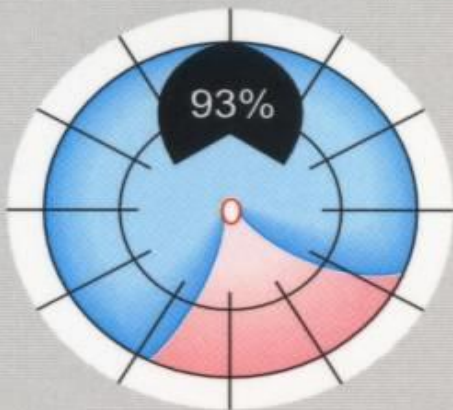
## *Lincoff Rules*



### Rule 1:

**Superior temporal or nasal detachments:**

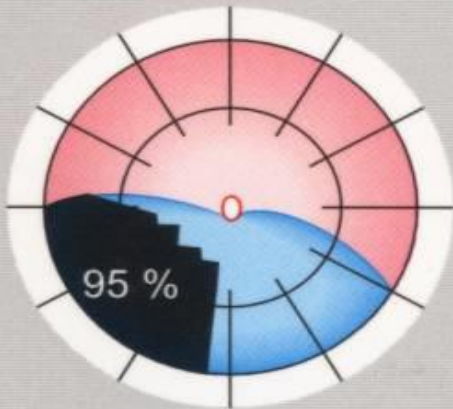
In 98 % the primary break lies within 1<sup>1</sup>/<sub>2</sub> clock hours of the highest border.



### Rule 2:

**Total or superior detachments that cross the 12 o'clock meridian:**

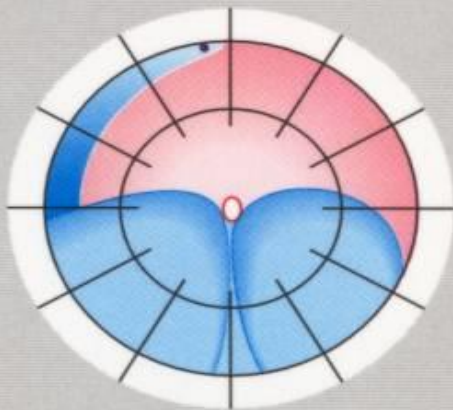
In 93 % the primary break is at 12 o'clock or in a triangle, the apex of which is at the ora serrata, and the sides of which extend 1<sup>1</sup>/<sub>2</sub> clock hours to either side of 12 o'clock.



### Rule 3:

**Inferior detachments:**

In 95 % the higher side of the detachment indicates on which side of the disc an inferior break lies.



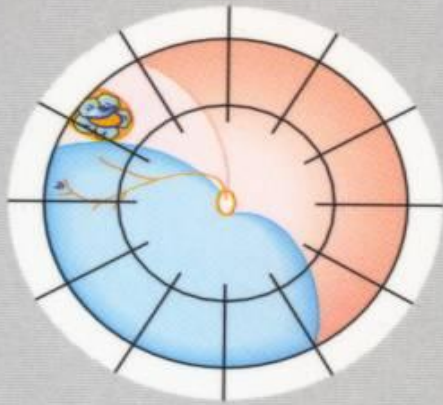
### Rule 4:

**»Inferior« bullous detachment:**

Inferior bullae in a rhegmatogenous detachment originate from a superior break.

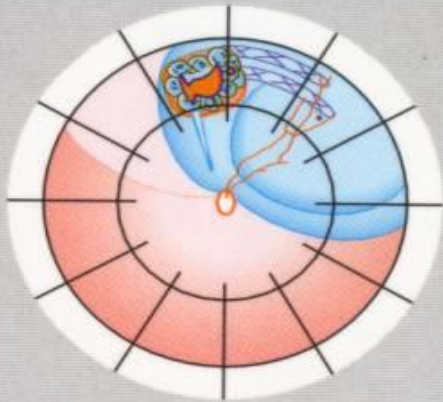
# Rules to Find the Break in Reoperation

## *Lincoff – Kreissig Rules*



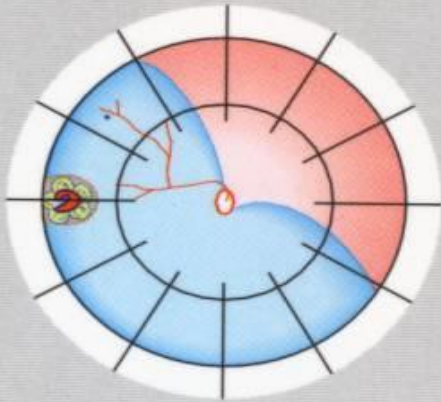
### **Rule 1:**

When the **superior border** of a temporal or nasal superior detachment **drops below the buckle**, it implies an undetected break within 1 1/2 clock hours below the new superior border.



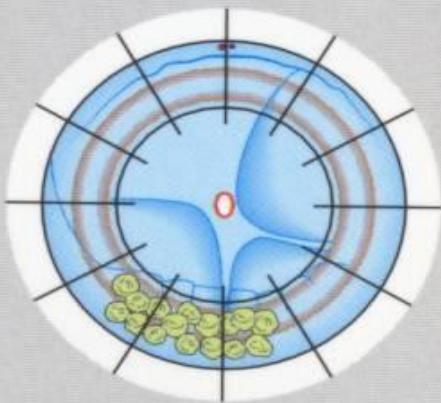
### **Rule 2:**

When the pattern of a detachment (superior, lateral or inferior) converts from **one pattern to another**, it indicates an undetected break consistent with the new pattern.



### **Rule 3:**

When the **borders** of a detachment remain **unchanged** after a buckling operation and the buckle is in correct position, it implies an undetected break above the buckle.



### **Rule 4:**

When a **total detachment** remains **unchanged** after being encircled and drained, it implied an undetected break anterior to the existing cerclage near 12 o'clock.